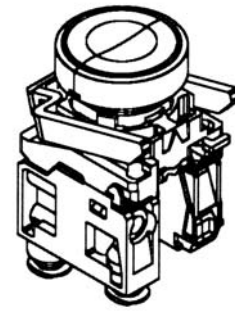


Panel Mounted Valves Visual Indicators



Panel mounted valves	Page
Technical specifications	4
Flush push-button operated valves	4
Mushroom head push-button operated valves	4
Lever selector operated valves	5
Valves with mounting blocks.....	5
Basic valves	5
Electric switches.....	5
Mounting blocks	6
Push-button actuators	6
Lever selector actuators and joystick controllers.....	7
Dimensions and installation.....	8
Visual indicators	Page
Technical specifications and order codes	9
Stocked visual indicators and dimensions.....	10

- Panel mounted actuators
- 3/2 NO and 3/2 NC air valves
- NO and NC electric switches piggy-backed on air valves
- Modular construction
- Up to three valves operated by a single push-button
- Wide range of actuators
- Push-in straight or swivel elbow connections
- No tools required for assembling components



Technical information

Working pressure

PXB-B3**	1 to 9 bar
PXB-B4**	1 to 10 bar

Working temperature

-15 °C to +60 °C

Flow (acc. to ISO 6358)

	Qmax	Qn
PXB-B3**	60NL/min	30NL/min
PXB-B4**	240NL/min	120NL/min

Connections

$\varnothing 4$ mm straight push-in
 $\varnothing 4$ mm swivel push-in

Exhaust

PXB-B3** Not ported
 PXB-B4** Ported, 4mm push-in

Media

Compressed air
 Inert gases

Flush push-button operated valves - most common versions

Symbol	Actuator	Return	Operating force at 6 bar, N	Flow Qmax NL/min	Weight kg	Order code straight connections	Order code swivel connections
	Push-button Black	Spring	8,5 6,0	60 240	0,077 0,082	PXB-B3111BA2 PXB-B4131BA2	PXB-B3112BA2 PXB-B4132BA2
	Push-button Green	Spring	8,5 6,0	60 240	0,077 0,082	PXB-B3111BA3 PXB-B4131BA3	PXB-B3112BA3 PXB-B4132BA3
	Push-button Red	Spring	8,5 6,0	60 240	0,077 0,082	PXB-B3111BA4 PXB-B4131BA4	PXB-B3112BA4 PXB-B4132BA4
	Push-button Black	Spring	16,5 14,0	60 240	0,087 0,082	PXB-B3251BA2 PXB-B4231BA2	PXB-B3252BA2 PXB-B4232BA2

For less common combinations select valves, mounting blocks and actuators to suit application

Mushroom head push-button operated valves - most common versions

Symbol	Actuator	Return	Operating force at 6 bar, N	Flow Qmax NL/min	Weight kg	Order code straight connections	Order code swivel connections
	Push-button $\varnothing 40$ mm Black	Spring	12 6,5	60 240	0,122 0,127	PXB-B3111BC2 PXB-B4131BC2	PXB-B3112BC2 PXB-B4132BC2
	Latching push-button Red $\varnothing 40$ mm	Twist	48 42,5	60 240	0,125 0,127	PXB-B3111BT4 PXB-B4131BT4	PXB-B3112BT4 PXB-B4132BT4
	Latching push/pull-button Red $\varnothing 40$ mm	Twist	48 43,5	60 240	0,125 0,127	PXB-B3121BT4 PXB-B4131BT4	PXB-B3122BT4 PXB-B4132BT4

For less common combinations select valves, mounting blocks and actuators to suit application

Lever selector operated valves - most common versions

Symbol	Actuator	Return	Flow Qmax NL/min	Weight kg	Order code straight connections	Order code swivel connections
		Stay-put short handle 2-position, black	Twist 60 240	0,092 0,097	PXB-B3111BD2 PXB-B4131BD2	PXB-B3112BD2 PXB-B4132BD2
		Stay-put short handle 2-position, black	Twist 60 240	0,102 0,107	PXB-B3211BD2 PXB-B4231BD2	PXB-B3212BD2 PXB-B4232BD2
		Stay-put short handle 3-position, black	Twist 60 240	0,102 0,107	PXB-B3251BD2 PXB-B4231BD2	PXB-B3252BD2 PXB-B4232BD2
		Stay-put short handle 3-position, black	Twist 60 240	0,102 0,107	PXB-B3211BD3 PXB-B4231BD3	PXB-B3212BD3 PXB-B4232BD3
		Stay-put short handle 3-position, black	Twist 60 240	0,102 0,107	PXB-B3251BD3 PXB-B4231BD3	PXB-B3252BD3 PXB-B4232BD3
		Spring centred long handle 3-position, black	Spring 60 240	0,103 0,107	PXB-B3211BJ5 PXB-B4231BJ5	PXB-B3212BJ5 PXB-B4232BJ5

For less common combinations select valves, mounting blocks and actuators to suit application

Valves with mounting blocks

For ZB4-B** Series actuators see pages 6 and 7

Symbol	Actuator	Return	Operating force at 6 bar, N	Flow Qmax NL/min	Weight kg	Order code straight connections	Order code swivel connections
		Spring	7	60	0,048	PXB-B3111B	PXB-B3112B
			4,5	240	0,053	PXB-B4131B	PXB-B4132B
		Spring	8	60	0,048	PXB-B3121B	PXB-B3122B
			4,5	240	0,053	PXB-B4131B	PXB-B4132B

Valves

Symbol	Actuator	Return	Operating force at 6 bar, N	Flow Qmax NL/min	Weight kg	Order code
		Spring	7	60	0,010	PXB-B3911
			4,5	240	0,015	PXB-B4931
		Spring	8	60	0,010	PXB-B3921
			4,5	240	0,015	PXB-B4931
		Spring	7	60	0,015	PXB-B3912
			4,5	240	0,015	PXB-B4932
			8	60	0,015	PXB-B3922
		Spring	4,5	240	0,015	PXB-B4932

Electric switches

Connections	Type of contact	Weight kg	Order code
	Normally open (NO) 	0,011	ZBE-101
	Normally closed (NC) 	0,011	ZBE-102

Mounting block for valves and actuators



Description	For Metal head ZB4	
	Weight kg	Order code
Mounting block for valves and actuators:	0,038	ZB4-BZ009

Spring return push-button actuators

	Description	Colour	Metal head		
			Weight kg	Order code	
	Flush	Black	0,029	ZB4-BA2	* = Supplied with one each black, white, red, yellow, green and blue cap.
		Green	0,029	ZB4-BA3	
		Red	0,029	ZB4-BA4	
		6 colour caps*	0,029	ZB4-BA9	
	Projecting	Black	0,030	ZB4-BL2	
		Green	0,030	ZB4-BL3	
		Red	0,030	ZB4-BL4	
	Flush booted	Black	0,034	ZB4-BP2	

Push engage - push disengage actuators

	Description	Colour	Weight kg	Order code
	Flush	Black	0,029	ZB4-BH02
		Green	0,029	ZB4-BH03
		Red	0,029	ZB4-BH04




Double headed spring return push-button actuator

	Description	Colour Marking	Weight kg	Order code	
	Flush	Green/Red	0,047	ZB4-BA8234	Both push-buttons are spring return.


Mushroom head push-button actuators

	Description	Function	Colour	Weight kg	Order code
	ø40 mm Mushroom head	Spring return	Black	0,074	ZB4-BC2
			Green	0,074	ZB4-BC3
			Red	0,074	ZB4-BC4
		Latching push-pull	Red	0,077	ZB4-BT4
	ø60 mm Mushroom head	Spring return	Black	0,093	ZB4-BR2
	ø40 mm Mushroom head	Latching Turn to release	Red	0,070	ZB4-BS54
		Latching Release by Ronis key N°455	Red	0,070	ZB4-BS14

Lever selector actuators

	Description	Function		Weight kg	Order code
	Short black handle	2 positions	Stay put	0,044	ZB4-BD2
		3 positions	Stay put	0,044	ZB4-BD3
		3 spring return to centre		0,044	ZB4-BD5
	Long black handle	2 positions	Stay put	0,045	ZB4-BJ2
		3 positions	Stay put	0,045	ZB4-BJ3
			Spring return to centre	0,045	ZB4-BJ5
			Spring return from left to centre	0,045	ZB4-BJ7
	Key operated (Ronis N° 455)	2 stay put positions	Left	0,069	ZB4-BG2
			Left and right	0,069	ZB4-BG4

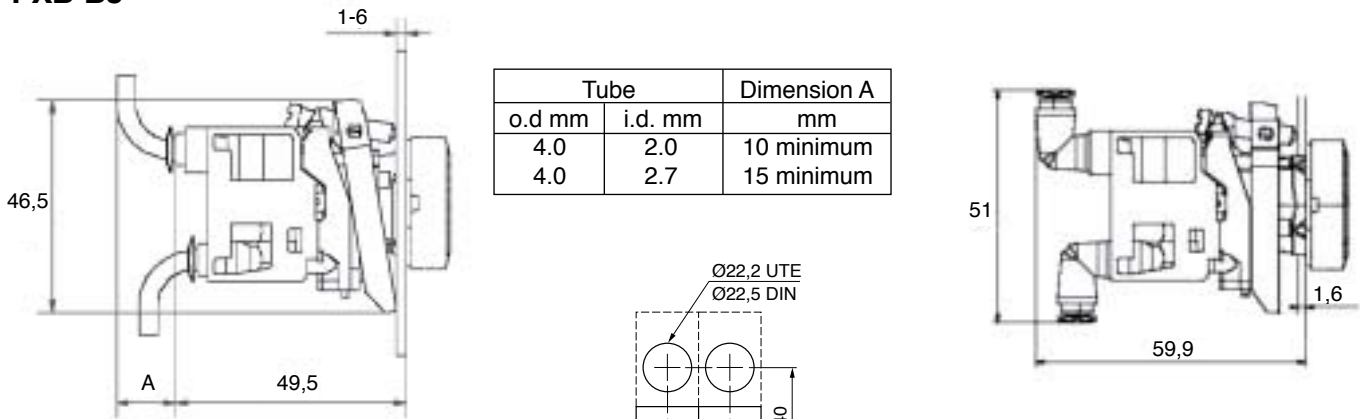
Joystick controllers - 2 directions (east-west or north-south only)

	Description	Metal head		
		Weight kg	Order code	
	3-position stay put	0,094	ZD4-PA12	Supplied complete with mounting block as shown.
	3-position spring centred	0,094	ZD4-PA22	Supplied complete with mounting block as shown.

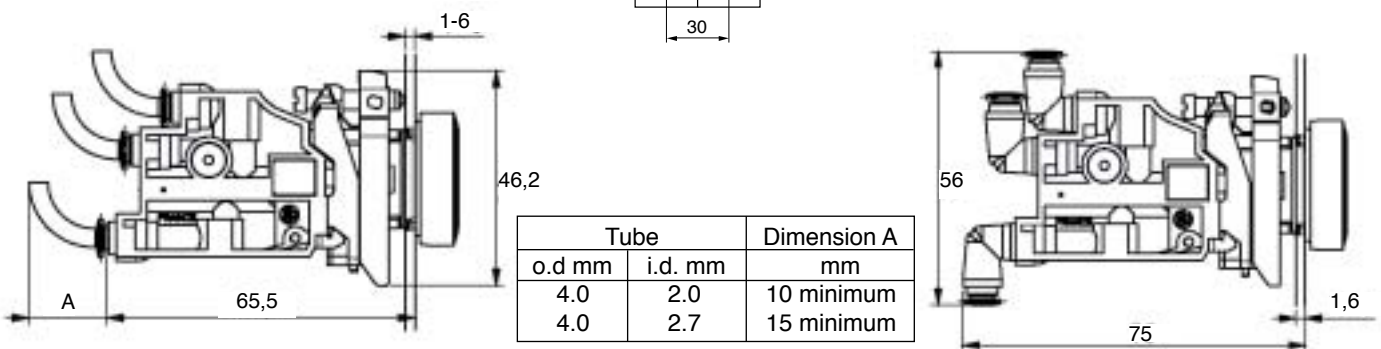
Legend plates

Description	Weight kg	Order code
Blank legend plate	0,003	ZB2-BY2101

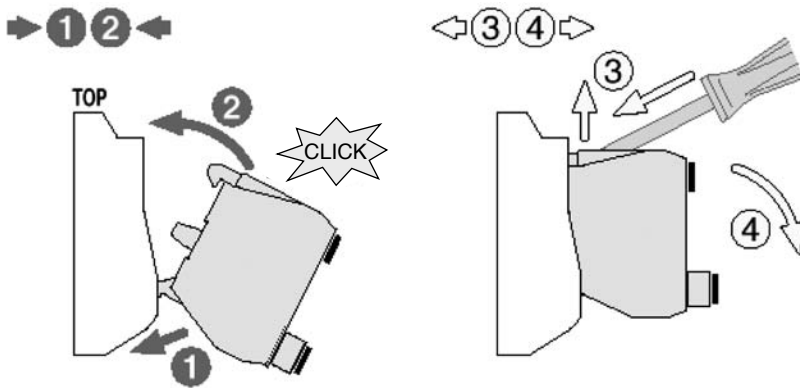
PXB-B3



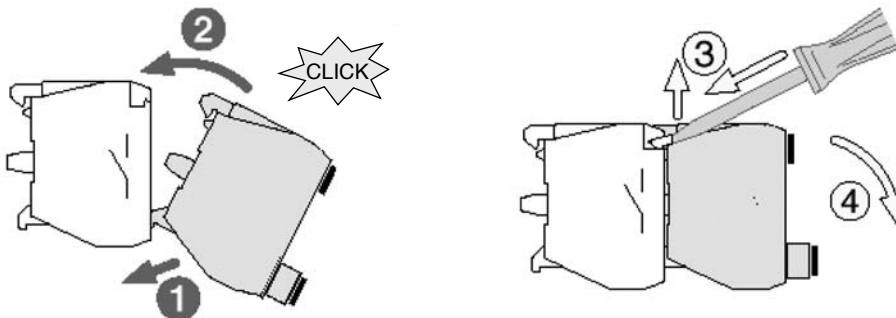
PXB-B4



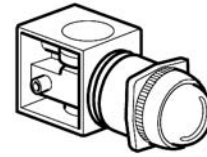
Installing/removing PXB-B valves onto/from mounting blocks



Installing/removing PXB-B valves onto/from the backs of electric switches



- Fast response
- Simple long life mechanism
- Very high contrast
- All around visibility
- One single pipe connection
- Effective aid to diagnostics



Operating information

Working pressure 1-8 bar
 Working temperature -15 °C to +60 °C

Options and additional information

Connections ø4 mm straight push-in
 as standard

Order key

P X V - F 1 2 1 3

	ø
F1	22 mm

	Colour, air on
1	White
2	Black
3	Green
4	Red
5	Yellow
6	Blue

	Connection
1	ø4 mm Push-in

	Colour, air off
1	White
3	Green
4	Red
5	Yellow
6	Blue
Blank	Black

Indicators listed on Page 10 are stocked. Others are available on indent.
 Minimum order quantities may apply to indent orders.


$\varnothing 22$ mm Visual Indicators

Black plastic bezel

Symbol	Colour actuated	Colour unactuated	Weight kg	Order code
	Green	Black	0,080	PXV-F131
	Red	Black	0,080	PXV-F141
	Yellow	Black	0,080	PXV-F151
	Blue	Black	0,080	PXV-F161
	White	Black	0,080	PXV-F111

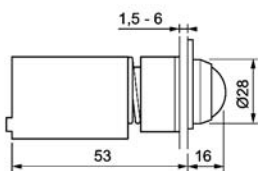
$\varnothing 22$ mm Visual Indicators

Black plastic bezel

Symbol	Colour actuated	Colour unactuated	Weight kg	Order code
	Black	Green	0,080	PXV-F1213
	Black	Red	0,080	PXV-F1214
	Black	Yellow	0,080	PXV-F1215
	Black	Blue	0,080	PXV-F1216
	Black	White	0,080	PXV-F1211

$\varnothing 22$ mm visual indicators

PXV-F1..



Minimum distances between centres

